



# Concord Child Care Center

Concord, CA | 925.689.5151

Program was rated in 2016 on the following:

Quality Ratings:			
<b>2</b>	<b>3</b>	<b>4</b>	<b>5</b>
<b>APPROACHING</b> Quality Standards	<b>IMPLEMENTING</b> Quality Standards	<b>MASTERING</b> High Quality Standards	<b>EXCEEDING</b> High Quality Standards

See full rating criteria...

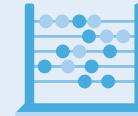
[READ MORE](#)

## TEACHER-CHILD RELATIONSHIPS

4

Scores high on providing:

- Emotional support
- An organized classroom
- Consistent schedules and routines
- Interactions that build vocabulary, critical thinking skills and curiosity
- Lessons that include children's experiences and ideas



## ENVIRONMENT

5

Rates highest on providing:

- A safe, clean, and enriching environment
- Good health practices
- A variety of activities, materials and play areas right for a child's age



## TEACHER QUALIFICATIONS

5

BA degree in Early Childhood Education (ECE)



## CHILD SKILLS AND OBSERVATION

5

Evaluates children's learning and development, enters results into a software program to help each child learn, and holds parent conferences



## HEALTH & DEVELOPMENT

5

Uses a form recommended by pediatricians to check children's development, including social and emotional development; ensures children receive annual vision and hearing tests



## TEACHER TO CHILD RATIOS

4

Infant/Toddler:  
3:12 or 2:8 ratio

Toddler:  
2:10 ratio

Preschool:  
3:24 or 2:20 ratio

