



First Baptist Head Start: East Leland

Pittsburg, CA | 925.473.2073

Program was rated in 2017 on the following:

Quality Ratings:			
2 APPROACHING Quality Standards	3 IMPLEMENTING Quality Standards	4 MASTERING High Quality Standards	5 EXCEEDING High Quality Standards

See full rating criteria...

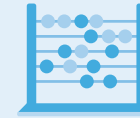
[READ MORE](#)

TEACHER-CHILD RELATIONSHIPS

4

Scores high on providing:

- Emotional support
- An organized classroom
- Consistent schedules and routines
- Interactions that build vocabulary, critical thinking skills and curiosity
- Lessons that include children's experiences and ideas



ENVIRONMENT

3

Has been assessed on providing a safe, clean and enriching environment and has plan for improvements



TEACHER QUALIFICATIONS

2

12 to 24 Early Childhood Education (ECE) college units



CHILD SKILLS AND OBSERVATION

4

Evaluates children's learning and development, uses results to help children learn, and holds parent conferences



HEALTH & DEVELOPMENT

3

Checks to see if children are developing on track; ensures children receive annual vision and hearing tests



TEACHER TO CHILD RATIOS

5

Infant/Toddler: 3:9 (or better) ratio

Toddler: 3:12 (or better) ratio

Preschool: 1:8 ratio
Group size no more than 20

