

RATING ACHIEVED!

4

First Baptist Head Start: Woods Manor

Pittsburg, CA | 925.473.2011

Program was rated in 2017 on the following:

Quality Ratings:

2

APPROACHING
Quality Standards

3

IMPLEMENTING
Quality Standards

4

MASTERING
High Quality Standards

5

EXCEEDING
High Quality Standards

See full rating criteria...

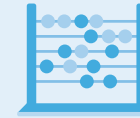
[READ MORE](#)

TEACHER-CHILD RELATIONSHIPS

4

Scores high on providing:

- Emotional support
- An organized classroom
- Consistent schedules and routines
- Interactions that build vocabulary, critical thinking skills and curiosity
- Lessons that include children's experiences and ideas



ENVIRONMENT

4

Rates high on providing:

- A safe, clean, and enriching environment
- Good health practices
- A variety of activities, materials and play areas right for a child's age



TEACHER QUALIFICATIONS

5

BA degree in Early Childhood Education (ECE)



CHILD SKILLS AND OBSERVATION

5

Evaluates children's learning and development, enters results into a software program to help each child learn, and holds parent conferences



HEALTH & DEVELOPMENT

3

Checks to see if children are developing on track; ensures children receive annual vision and hearing tests



TEACHER TO CHILD RATIOS

4

Infant/Toddler:
3:12 or 2:8 ratio

Toddler:
2:10 ratio

Preschool:
3:24 or 2:20 ratio



IMPROVING EARLY LEARNING
IN CONTRA COSTA